



About us

Factory expanded & relocated in 2021, owned an industrial park which covers an area of 12,000m² with more than 300 employees.

medical device manufacturing licence, US FDA listed, ISO13485 medical device quality management system certificate, etc.



174+

12,000m²
Factory Area

18 Years

ODM & OEM Manufacturer Experience

10

Sets Annual Production Output



Patents





SCAN ME

TC1600-B09

RIC Binaural Hearing-Aids



Applicable For Moderately Severe Hearing Loss People

Maximum output sound pressure level (OSPL ₉₀)	$\leq 117 \text{ dB} \pm 3 \text{ dB}$	Hearing aids battery capacity	45 mAh
HFA Avg(FOG50)	$50 \pm 4 \text{ dB}$	Charging case battery capacity	400 mAh
Frequency response range	$< 300 \text{ Hz} \rightarrow 6500 \text{ Hz}$	Hearing aids working time	10 hours (continuous working)
Equivalent input noise/EIN	$< 32 \text{ dB}$	Hearing Mode Working Time (Including Charging Case)	40 hours



SCAN ME



1600-P23



Applicable For Mild to Moderate
Hearing Loss People

WDRC 16 Channels

Maximum output sound pressure level (OSPL90)	$\leq 113 \text{ dB} + 3 \text{ dB}$
HFA Avg (FOG50)	$40 \pm 4 \text{ dB}$
Frequency response range	$< 280 \text{ Hz} \sim > 6000 \text{ Hz}$
Equivalent input noise/EIN	$< 32 \text{ dB}$

Hearing aids battery capacity	35 mAh
Charging case battery capacity	420 mAh
Hearing aids working time	7 hours (continuous working)
Hearing Mode Working Time (Including Charging Case)	35 hours



A SCAN ME

1600-P16



Applicable For Mild to Moderate Hearing Loss People

WDRC 16 Channels

Maximum output sound pressure level (OSPL90)	$\leq 110 \text{ dB} \pm 3 \text{ dB}$
HFA Avg(FOG50)	$35 \pm 4 \text{ dB}$
Frequency response range	$< 300 \text{ Hz} \sim > 6500 \text{ Hz}$
Equivalent input noise/EIN	$< 32 \text{ dB}$

Hearing aids battery capacity	45 mAh
Charging case battery capacity	400 mAh
Hearing aids working time	10 hours (continuous working)
Hearing Mode Working Time (including Charging Case)	40 hours



SCAN ME



1600-P16



Applicable For Mild to Moderate Hearing Loss People

WDRC 16 Channels

Maximum output sound pressure level (OSPL₉₀) ≤113 dB+3 dB

HFA Avg(FOG50) 40±4 dB

Frequency response range <300 Hz->6500 Hz

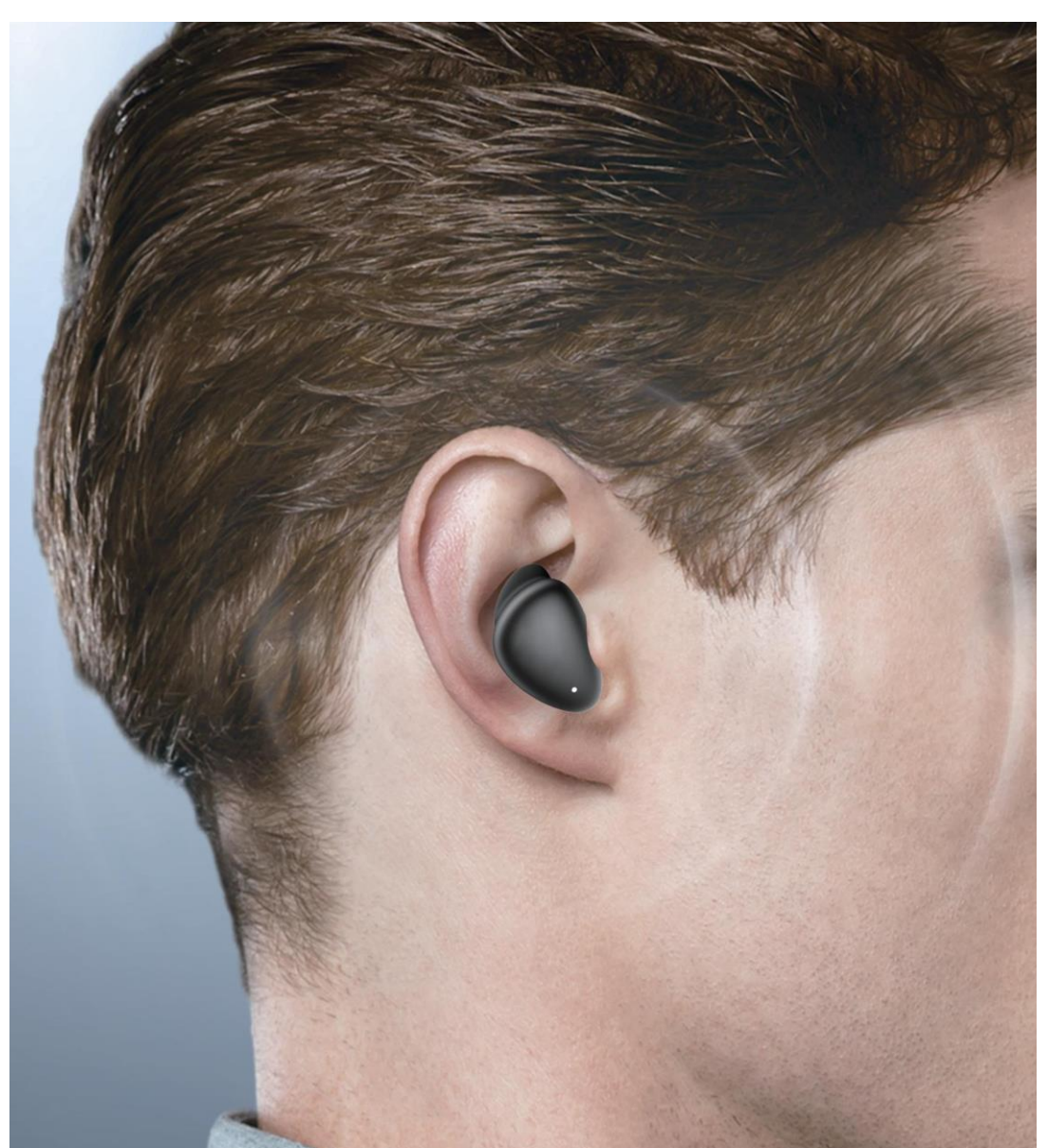
Equivalent input noise/EIN <32 dB

Hearing aids battery capacity 60 mAh

Charging case battery capacity 400 mAh

Hearing aids working time 12 hours (continuous working)

Hearing Mode Working Time (including Charging Case) 40 hours



A SCAN ME



16 Channels



Dual Howling
Suppression



Millisecond
Frequency Shift



APP Configuration



1600-N8

Applicable For Mild to Moderate
Hearing Loss People

WDRC 16 Channels

Maximum output sound pressure level (OSPL₉₀) $\leq 115 \text{ dB} \pm 3 \text{ dB}$

HFA Avg(FOG50) $35 \pm 4 \text{ dB}$

Frequency response range $< 300 \text{ Hz} \sim > 6000 \text{ Hz}$

Equivalent input noise/EIN $< 32 \text{ dB}$

Hearing aids battery capacity 250 mAh

Hearing aids working time 38 hours (continuous working)



SCAN ME



SCAN ME



1600-N15



Applicable For Moderately Severe Hearing Loss People

Maximum output sound pressure level (OSPL90) $\leq 116 \text{ dB} \pm 3 \text{ dB}$

HFA Avg(FOG50) $45 \pm 4 \text{ dB}$

Frequency response range $< 300 \text{ Hz} \sim > 6500 \text{ Hz}$

Equivalent input noise/EIN $< 32 \text{ dB}$

Hearing aids battery capacity 250 mAh

Hearing aids working time 38 hours (continuous working)



LORECa[®]

Shenzhen LORECa Electronics Technology Co., Ltd.

深圳市罗雷卡电子科技有限公司



A SCAN ME